

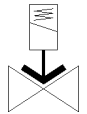
solenoid valve

VZWF-L-M22C-G112-400-E-2AP4-10

Part number: 1492228

FESTO

force pilot operated, G11/2" connection.



Data sheet

Feature	Value
Design structure	Diaphragm valve forced
Type of actuation	electrical
Sealing principle	soft
Assembly position	Magnet standing
Mounting type	Line installation
Process valve connection	G1 1/2
Electrical connection	Plug Cubic design to EN 175301-803 Plug pattern type A to EN 175301-803
Nominal size	40 mm
Valve function	2/2 closed, monostable
Manual override	None
Flow direction	non reversible
Medium	Compressed air in accordance with ISO8573-1:2010 [7:-:-] Inert gases Mineral oil Water Neutral fluids Other media on request
Nominal pressure of process valve	40
Differential pressure	0 bar
Characteristic coil data	110 V AC: 50/60 Hz, pick-up power 30 VA, holding power 30 VA
Permissible voltage fluctuation	+/- 10 %
Medium pressure	0 ... 10 bar
Max. viscosity	22 mm ² /s
Medium temperature	-10 ... 80 °C
Ambient temperature	-10 ... 35 °C
Leak rate in accordance with EN 12266-1	A
Flow rate Kv	22.5 m ³ /h
Standard nominal flow rate	23,500 l/min
Switching time on	620 ms
Switching time off	1,140 ms
Materials note	Contains PWIS substances Conforms to RoHS
Material housing	Cast brass
Material number for housing	CW617N
Material seals	EPDM
Material screws	High alloy steel, non-corrosive
Material number, screw	1.4301
Product weight	4,500 g
CE mark (see declaration of conformity)	to EU directive pressure devices to EU directive low-voltage devices
Protection class	IP65
Corrosion resistance classification CRC	1 - Low corrosion stress